

www.FK50.info

**PIN TESTING SYSTEM
FK50**



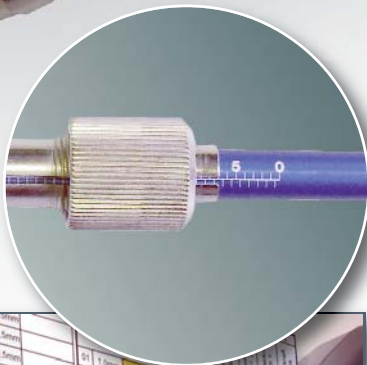
Pin Testing System FK50 Art. No. 401 443
Pin Testing System FK50 Studio Art. No. 401 779

**PIN TESTING SYSTEM FK50 & FK50 Studio
Efficient Spring Force Measurement for Test Pins up to 50 N**

Flexibly implementable and easy to operate - with the new Pin Testing System FK50 you assure the quality of your testing equipment. You can test the tension of each individual test pin in an easy manner and manually take over the metered values, displayed on a large screen, directly into your maintenance logs. The Pin Testing System FK50 Studio enables the automatic measurement evaluation for logging into your system. In addition, when combining the TSK cable testers, simple classification and documentation of the test adaptor's respective pin is possible.

Interchangeable probe tips ensure that the Pin Testing System can be implemented for almost all test pins from renowned manufacturers.

The Pin Testing System FK50 & FK50 Studio not only makes spring Force measuring more efficient and safe, it also simultaneously renders an important contribution to the professionalism of your maintenance protocols.



Stand 13.02.2013 | Copyright © TSK Prüfsysteme GmbH



TEST FUNCTIONS

- 5 kg (50 N) capacity, highest resolution and accuracy
- Measuring in kilogram, oz and N
- 3 display units: kg, oz, N
- Tension measuring at the press of a button
- Button for fast or slow response
- Retain maximum value
- Overload protection 7.5 kg
- Various probe tips for different types of test pins
- Forwarding of performance data via a RS232 interface to a PC



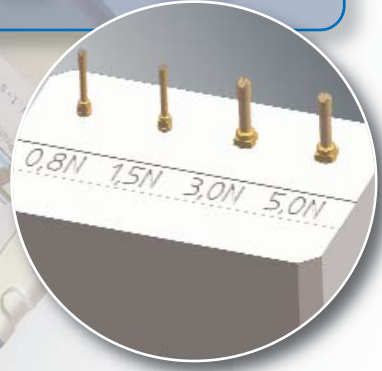
ACCESSORIES

- Various probe tips
- USB - serial converter (incl. software)
- Power pack
- Recalibration

PURCHASED PARTS PACKAGE

- Pin Testing System incl. probe tips adaptor
- 6 St. 1.5 V AA, UM-3 Mignon batteries
- Standard probe tip Ø 4.0 mm, (one additional probe tip)*
- Original test pins*
- Manufacturer's certificate of calibration
- Documentation
- Data cable
- FK50 Studio* for measuring evaluation (Windows XP/7 and the CS WIN rx from Version 3.4.3.0, with the option Quality Professional, Art. No.: 401 467, is required and the connection via RS232 to the Test System.)
- Reference charts
- carrying case

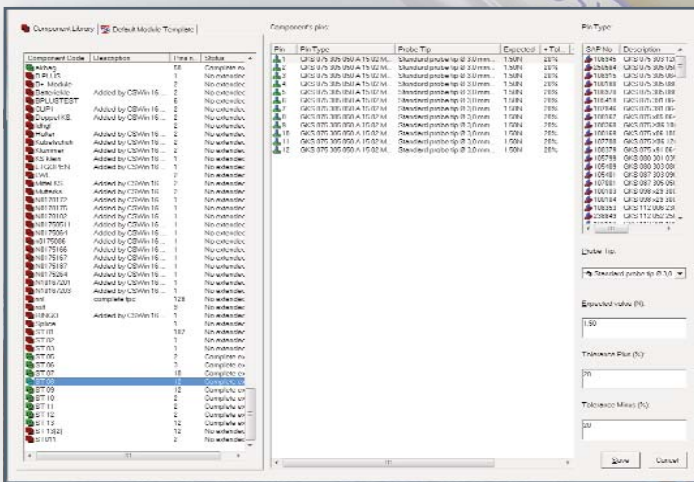
* only with the configuration FK50 Studio



The measuring sleeves can be ordered from TSK with the SAP No.

MEASURING SLEEVES TO TEST THE SPRING FORCES OF FOLLOWING TEST PIN TYPES:

TEST PIN TYPES:	SAP No.	Sleeve
GKS 112 ... / F 732 ... /HSS 118	0,6 to 5,0 N	109 357
GKS 113 ... / F 733 ... /HSS 120	0,6 to 5,0 N	109 358
VF3 ...		109 410
VF4 ...		109 411
VF5 ...	20 N	in preparation
VF5 ...	34 N	109 412
V05 - 83 ...	20 N	in preparation
V05 - 83 ...	34 N	109 413
V05 - 93 ...	20 N	in preparation
V05 - 93 ...	34 N	109 414



TECHNICAL DATA

- Display** 5-digit, 10 mm LCD
- Direction of display** selectable via button on the front side of the device.
- Function** force of load and compressive force measurement
- Peak Hold** stores the maximum value
- Zero setting** for normal measuring mode and the max-loadmodus
- Metering range** 5 kg / 176.40 oz / 49.03 N (+/-0,5 % at 25 °C)
- Minimum Display** 3 g / 0.10 oz / 0,03 N
- Range selection** kg, oz, N
- Metered value renewal** every 0.2 s in fast mode / every 0.6 s in slow mode
- Voltage supply** 6 x 1.5 V AA, UM-3 batteries
- Power consumption** ca. 28 mA
- Dimensions** 227 x 83 x 39 mm