

Test Bench TS1400 - High demands of the smallest

The Price - The Characteristics of this Test System

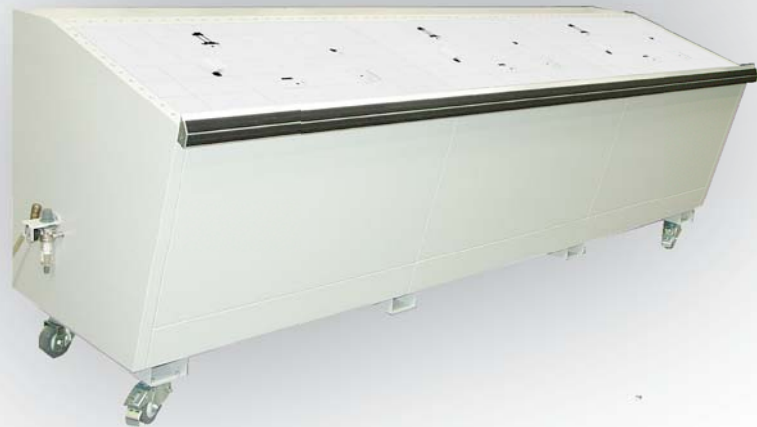
The Test Bench TS1400 - compact and good value

The low price means no cut-backs on performance and equipment. Merely the overall size is limited to a width of 3 meters. The combination with the cable testers CT15 and CT30 from TSK is particularly reasonable.

In this case, the angled work surface also guarantees good accessibility to adaptations from any position within the work surface. To achieve this very economical price, the upgradable equipment is always adjusted to the current necessary minimum. Casters allow flexible positioning within your production shop



Test Bench TS 1400
0,6 m (left), 1.0 m (right) and 3.0 m (below)

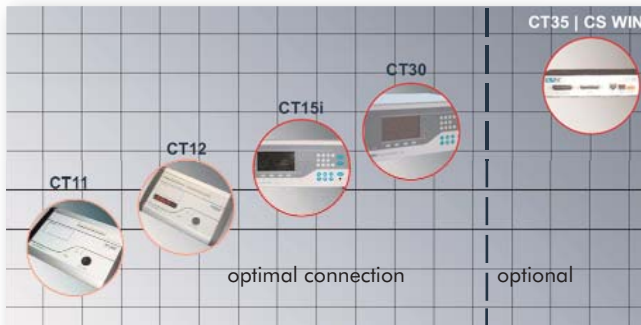


Areas of Application

- smaller and medium-sized wire harnesses
- optimal in connection with the cable testers CT15i and CT30 or
- optional with CT35 with the testing software CS WIN nx

Features*

- up to 3.0 m size
- up to 384 test points with cable tester CT15i
- up to 512 test points (for each 1.0 m of work surface) with cable tester CT30
- combination with cable tester CT35 and the user-friendly testing software CS WIN nx



Available cable tester from TSK



* The performance for the test of wire harnesses is depend on the used cable tester. Please read the relevant information of the cable tester from TSK.

Efficiency in quality assurance

Always up-to-date - Test Benches from TSK



TS1400 Power supply

Test variants

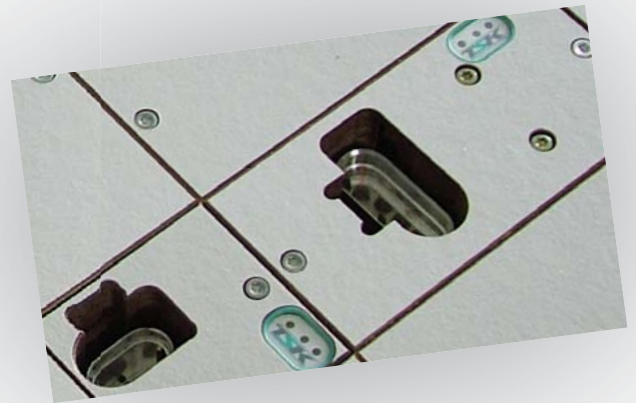
Cable tester and test point board inside the test system

- TSK-standard test point boards with even 128 test points
- via DIO-Kabel connected to the cable tester

Cable tester with internal test point boards

- Distribution boards with 256 test points
- via flat cable connected inside the cable tester

In both cases the wiring of the test points and the power supply to the test modules is led across the test point boards/distribution boards in the test system.



Technical Specification

Power Supply:	230 V / 115 V
Power consumption	up to 600 W
Air pressure:	6 Bar
Weight:	according to size (excl. fixture modules)
Work surface	600 (1.000 2.000, 3.000) x 600 mm
Dimensions (W x D x H):	600 (1.000 2.000, 3.000) x 1.000 x 1.200 mm

Standardized interfaces to the test modules allow the implementation of all TSK adaptation systems and in addition, also the implementation of products from other manufacturers.

Test Bench-Models TS1400

Test Bench	Art.-No.	Basic equipment			pneumatic connections	expandable to
		0,6m depth	test points	expandable to		
TS1400 CT, 0,6m for external cable tester	401 602		128 TP	3 x 128 TP	20	50 / 40*
TS1400 CT, 1,0 m for external cable tester	401 221		128 TP	4 x 128 TP	20	50 / 40*
TS1400 CT, 2,0 m for external cable tester	401 273		2 x 128 TP	8 x 128 TP	40	100 / 80*
TS1400 CT, 3,0 m for external cable tester	401 256		3 x 128 TP	12 x 128 TP	60	1500 / 120*

* fixture modules version 3 and 4 and function test modules