

# Test Bench TS1300 - High Quality in a small space

For the small test - in between

## The Test Bench TS1300 - flexibile and good value

This test system is the innovative solution for small and simple connections. The test system is available as a desktop in two sizes, with a flat and a large housing and a work surface of 400 x 400 mm.



Test System TS1300L  
with Cable Tester CT15i



Test System TS1300 with  
Cable Tester CT12

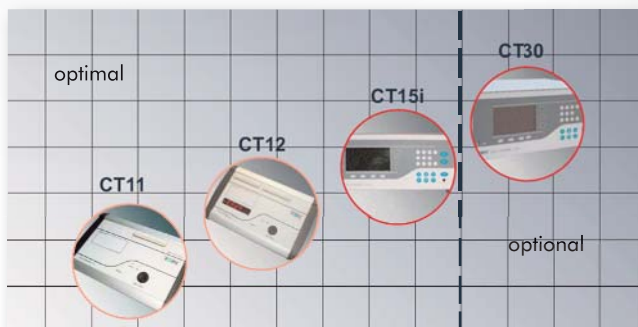
## Areas of Application

- Small and medium-sized wire harness and short multi-poled connections
- Ideal in connection with all TSK cable testers, especially CT11, CT12 and CT15i
- Barrier-free handling from a standing or sitting position
- Optimal in computer industry, in machine engineering and for small wire harness producing

## Features\*

- 64 (CT11) - 128 (CT12) test points
- Up to 256 test points with Cable Tester CT15i
- Quick and easy expandable to new test requirements
- Optionally available with the Cable Tester CT30

Information on the Internet: [www.kabeltester.info](http://www.kabeltester.info)

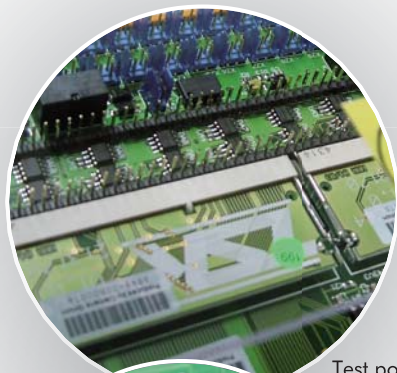


Available Cable Tester from TSK

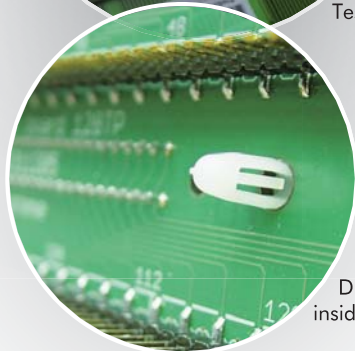
\* The performance for the test of wire harnesses is depend on the used cable tester. Please read the relevant information of the Cable Tester from TSK.

# Efficiency in quality assurance

Always up-to-date- Test Benches from TSK



Test point board



Distribution board inside the Test System

## Connection Varieties

### TS1300-ET, External Cable Tester with internal test point board

- Distribution board with even 128 test points inside the test system
- Fixtur modules connected with the distribution board
- Test points via ribbon cable connected to the cable tester



### TS1300-CT, External Cable Tester with internal test point boards inside the test system

- Max. two test point boards with even 128 test points
- Fixture modules conneted with the test point board
- Test points via DIO-cabel connected to the cable tester



## Technical Specifications

Power supply:	90 V - 260 V
Power consumption:	up to 70 W
Air pressure:	6 Bar
Weight:	ca. 18/20 kg (excl. fixture modules)
Work surface:	400 x 400 mm
Dimensions (W x D x H):	480 x 650 x 300 mm
Dimensions L (W x D x H):	480 x 700 x 410 mm



## Test System TS1300

Test Bench	Art.-No.	Test Points	Equipment Pneumatic Connection
<b>TS1300-CT</b> (incl. Test Point Board) for Cable Tester CT30	401 577	128 TP to 256 TP	20 (Vers. 1)
<b>TS1300-ET</b> (incl. Distribution Board) for Cable Tester CT11, CT12, CT15i	401 578	128 TP	20 (Vers. 1)
<b>TS1300-FT</b> for Function Test	401 579	on request	20 (Vers. 1)

Optionally available: pneumatic connections to fixture modules version 3 and 4 as well as function test modules

Standardized interfaces to the test modules allow the implementation of all TSK adaptation systems and in addition, also the implementation of products from other manufacturers.

## Test System TS1300L

Test Bench	Art.-No.	Test Points	Equipment Pneumatic Connection
<b>TS1300-CT</b> (incl. Test Point Board) for Cable Tester CT30	401 610	128 TP to 256 TP	20 (Vers. 1)
<b>TS1300-ET</b> (incl. Distribution Board) for Cable Tester CT11, CT12, CT15i	401 611	128 TP	20 (Vers. 1)
<b>TS1300-FT</b> for Function Test	401 612	on request	20 (Vers. 1)

Optionally available: pneumatic connections to fixture modules version 3 and 4 as well as function test modules

## Accessories

<b>Pin Module</b> incl. Pin Cable	(210 292)
<b>Cover Plate Module</b> 100 x 100 x 21 mm	(400 200)
50 x 100 x 21 mm	(400 201)
100 x 50 x 21 mm	(400 202)